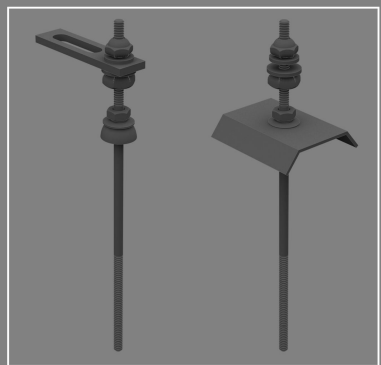
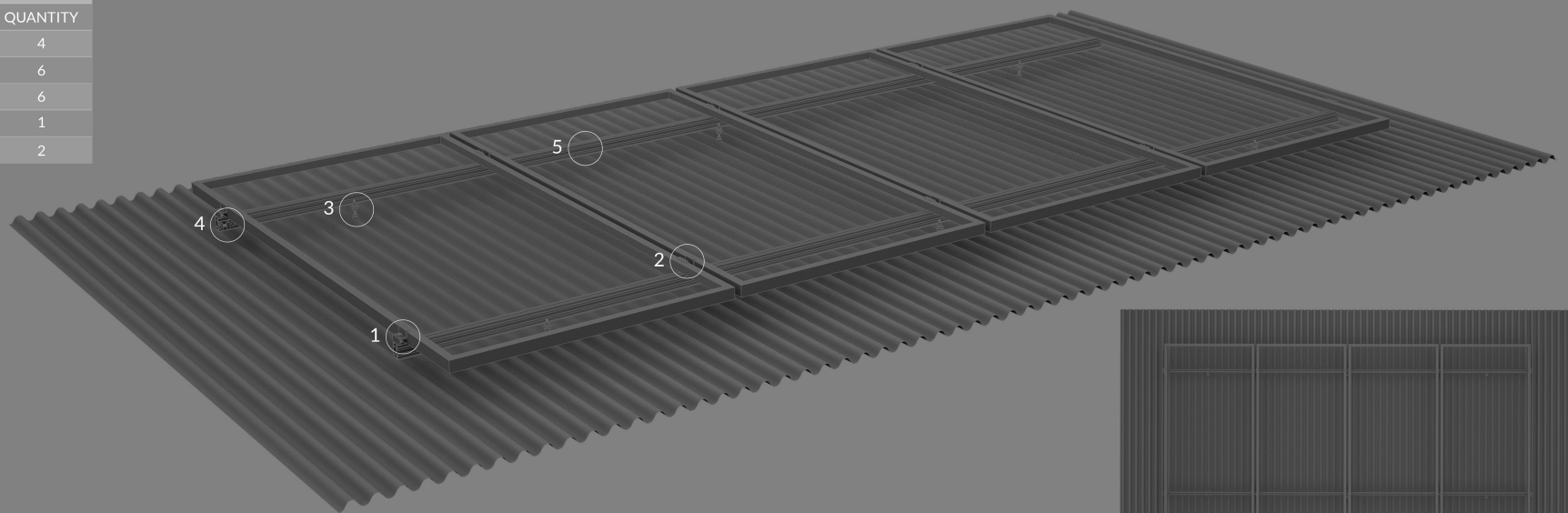
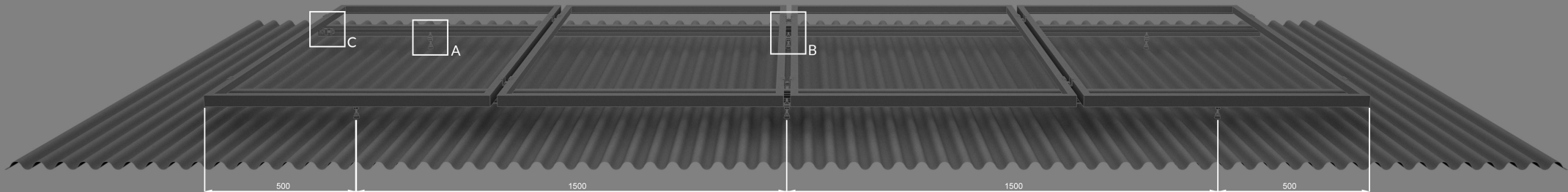
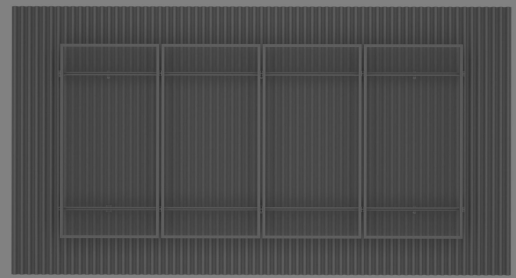


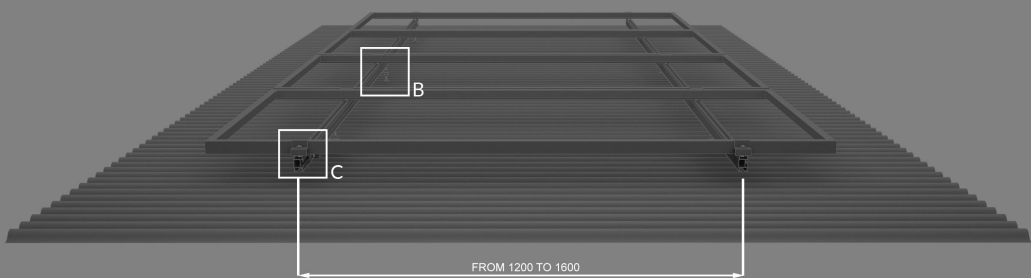
| LIST OF MATERIALS | | | |
|-------------------|-------------------|-------------------|----------|
| ITEM | CODE | DESCRIPTION | QUANTITY |
| 1 | OX-R6941/OX-R7003 | Kit Zeta clamp | 4 |
| 2 | OX-R6942 | Kit Omega clamp | 6 |
| 3 | OX-R7160/OX-R7161 | Fibroemento | 6 |
| 4 | AT-01 | Grounding | 1 |
| 5 | OX-R6970 | Rail Omnia 4.20mt | 2 |



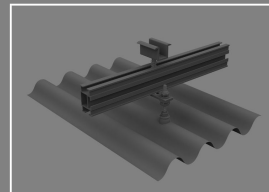
Detalle Tornillo Fibroemento



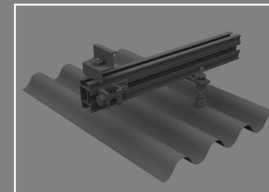
FRONT VIEW



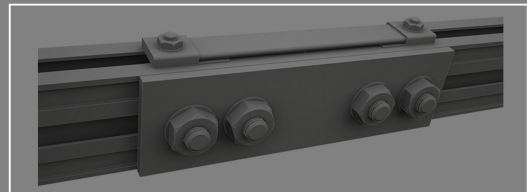
LEFT VIEW



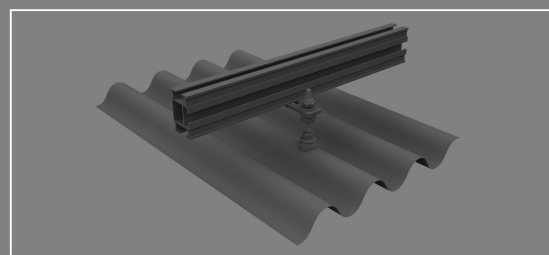
DETAIL B



DETAIL C



Detalle Union Perfiles Omnia



DETAIL A

| | | | | | | | | | |
|---|---------------------|--------|-------|--------------|-----------------|-----------|--------|---------|------------------|
| 01 | 07-01-2022 | EL | | | | | | | DATASHEET UPDATE |
| REV | REV DATE | DRWN | APVD | APVD | CHANGE NUMBER | | | | DESCRIPTION |
| UNITS CENTIMETERS | | | | | | | | | |
| DO NOT SCALE | | | | | | | | | |
| THIRD ANGLE PROJECTION | | | | | | | | | |
| | | | | | | | | | |
| TOLERANCES UNLESS NOTED .XXX ± .01 .XXX ± .005 X / XX ± 1 / 32 ANGLES 2° | | | | | | | | | |
| | | | | | | | | | |
| CONFIDENTIAL THIS DRAWING IS THE EXCLUSIVE PROPERTY OF RALUX LINE PRODUCTS COMPANY AND IS TO BE USED ONLY WITH THE PRIOR EXPRESSED PERMISSION OF RALUX SOLAR | | | | | | | | | |
| [PRODUCTION DRAWING TITLE] 214093 - SISTEMA ONDA | | | | | | | | | |
| QUALITY PLAN | | APVD: | DATE: | PART NUMBER: | DRAWING NUMBER: | | | | |
| B | QTY: | LABEL: | APVD: | DATE: | 214093 | 214093 | | | |
| 0 | CRITICAL DIMENSION: | | | | | | | | |
| V | VISUAL INSPECTION: | APVD: | DATE: | SCALE: | X:XXX | SHEET NO: | 1 OF 1 | ORIGIN: | REV: 01 |
| THIS DRAWING IS RALUX RACKING SYSTEM PROPERTY AND IT CAN'T BE COPIED OR TRANSMITTED TO ANYONE AUTHORIZATION | | | | | | | | | |