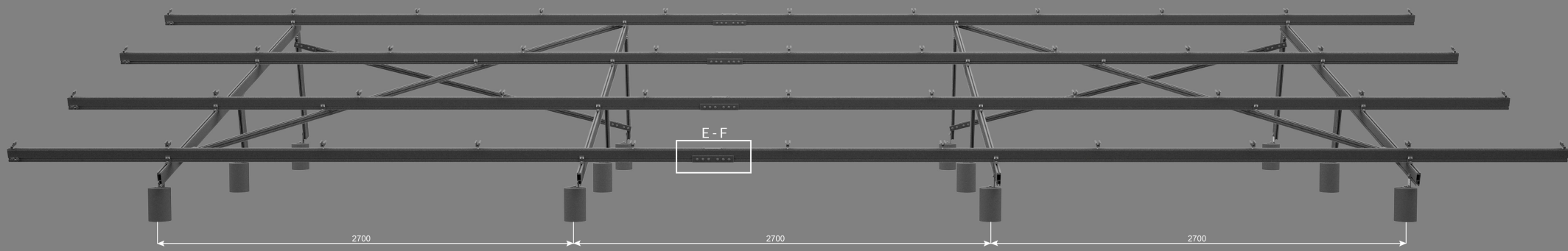
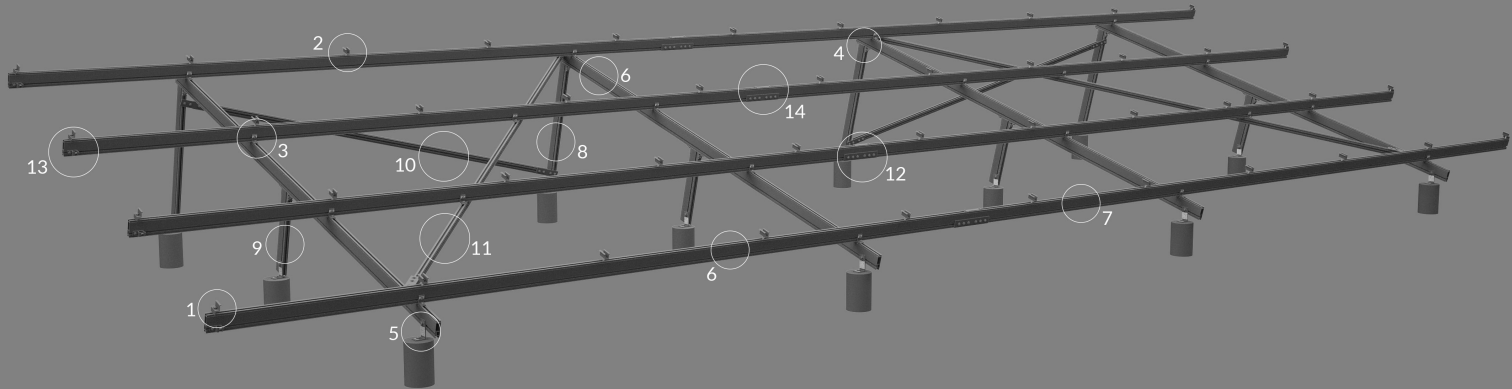


LIST OF MATERIALS

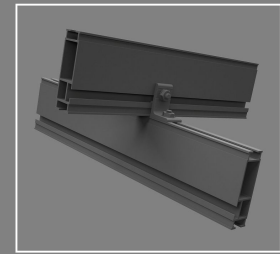
ITEM	CODE	DESCRIPTION	QUANTITY
1	OX-R6941	Kit Zeta clamp	8
2	OX-R6942	Kit Omega clamp	36
3	OX-R6990	Kit L-lock climber	20
4	OX-R6992	Kit L-lock pata trasera	16
5	OX-R6991	Kit L-foot 105x50	12
6	OX-R7215	Riel ACE 4.60mt	4
7	OX-R7215	Riel ACE 5.70mt	4
8	OX-R7215	Riel ACE 1.20mt	4
9	OX-R7215	Riel ACE 0.60mt	4
10	OX-R6970	Riel Omnia Strong 3.00mt	2
11	OX-R6970	Riel Omnia Strong 5.50mt	2
12	OX-R6980	Junction	4
13	AT-01	Grounding lug	4
14	AT-02	Bonding Jumper	4



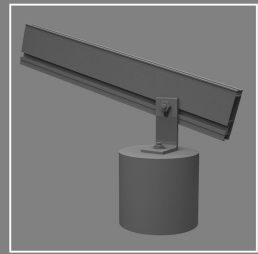
BACK VIEW



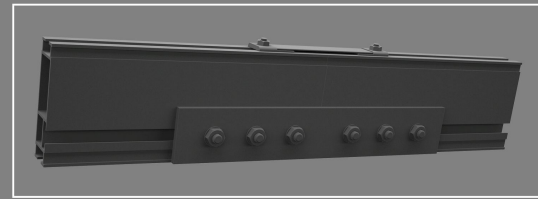
LEFT VIEW



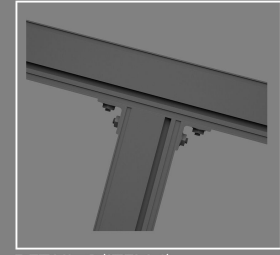
DETAIL A (ITEM 3)



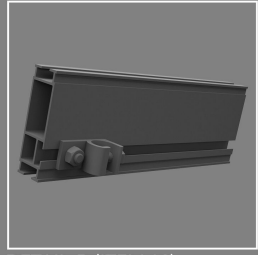
DETAIL B (ITEM 5)



DETAIL E - F (ITEM 12 - 14)



DETAIL C (ITEM 4)



DETAIL D (ITEM 13)

01	10-01-2022	EL					DATASHEET UPDATE
REV	REV DATE	DRWN	APVD	APVD	CHANGE NUMBER		DESCRIPTION
UNITS: CENTIMETERS							
DO NOT SCALE							
THIRD ANGLE PROJECTION							
TOLERANCES UNLESS NOTED .XX ± .01 .XXX ± .005 X / XX ± 1 / 32 ANGLES 2°							
CONFIDENTIAL THIS DRAWING IS THE EXCLUSIVE PROPERTY OF RALUX LINE PRODUCTS COMPANY AND IS TO BE USED ONLY WITH THE PRIOR EXPRESSED PERMISSION OF RALUX SOLAR							
(PRODUCTION DRAWING TITLE) RALUX ACE 2V - 15° INCLINATION							
QUALITY PLAN		APDV:	DATE:	PART NUMBER:	DRAWING NUMBER:		
QTY:	LABEL:	APDV:	DATE:	240147	240147		
0	CRITICAL DIMENSION	APDV:	DATE:				
0	VISUAL INSPECTION	APDV:	DATE:	SCALE:	SHEET NO:	ORIGIN:	REV:
				X:XXX	1 OF 1		01