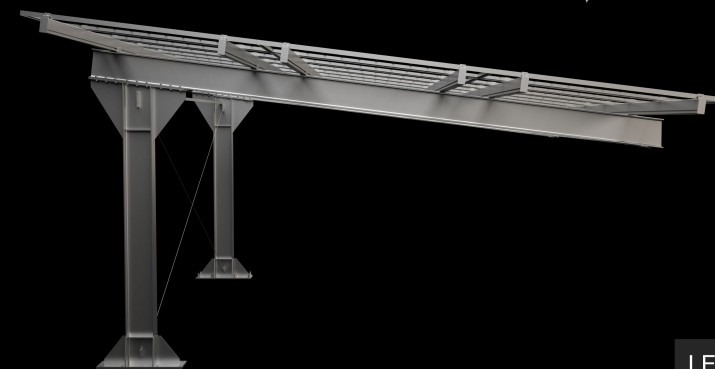
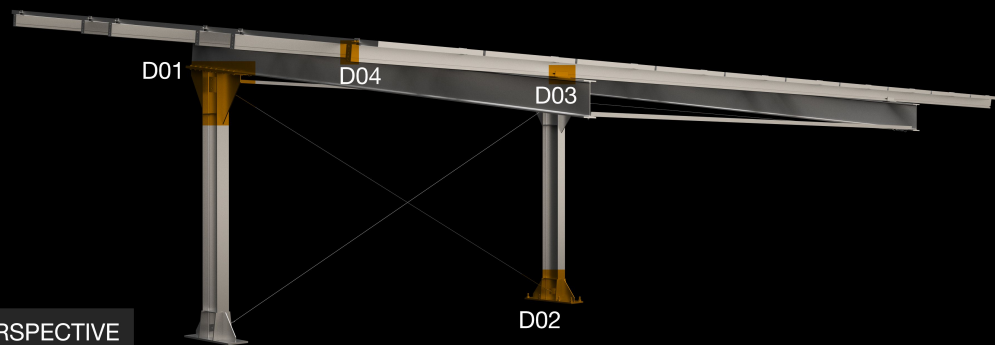


FRONT VIEW



LEFT VIEW

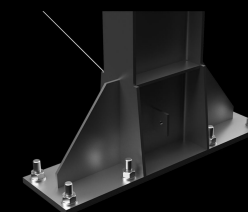


PERSPECTIVE

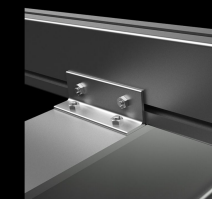
DETAILS



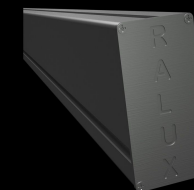
D01



D02



D03



D04

The **CARPORT FIRENZE INVERSO** is a cantilevered parking space with a modern design and able to maximize the installation surface of the photovoltaic panels. It can be supplied both in the single-arm version and in the two-arm version. This version guarantees the panels an optimal yield thanks to the orientation with respect to the sun.

- Galvanized steel structure and T6060 aluminum profile

- Possibility of color customization

- Possibility to position the panels in landscape and portrait

- Possibility of installing double-sided and frameless panels

- Various layout possibilities for the space available

- Technical support and calculation memories

- Foundation configuration for each installation site

- Quick and easy to install



Rugged Construction

Engineered steel and aluminum components ensure durability.



Flexible Architecture

Multiple foundation and array configuration options.



Design Assistant

Technical support team is dedicated to answering questions & addressing issues in real time.



25-Year Warranty

Products guaranteed to be free of impairing defects.